

WSRX30



CLARK WSRX30 A Power Steering Walkie Reach Truck

FEATURES & BENEFITS

- **HYDRAULICS**

Lift cylinder has hard chrome plated rods. Pump unit including motor, solenoid, gear pump, and pressure compensated lowering valve are mounted high in the power compartment for ease of service.

- **ELECTRICAL**

24-Volt ZAPI Combi-ACx, travel control with matching drive motor provide high performance throughout the entire speed range. Travel speed remains constant relative to throttle position regardless of load. Separately fused power control circuits, quick disconnect EPD power cut off, and hour meter /battery discharge indicator combination gauge complete the system. Power configurations and diagnostic features are displayed with a ZAPI handheld console.

- **BRAKES**

Regenerative electromagnetic brake is mounted on the motor armature shaft multiplying the braking power through the transmission. Brake is applied when the control arm is in the vertical or horizontal handle position. Travel speed is reduced when forks are above 12" fork height. Neutral braking resists roll back on ramps

- **CONTROLS**

Travel, lift, and lower functions are located in the ergonomic operator handle. All operator controls are accessible without having to lift the hand from the handle.

Angle grips are designed to allow easy operation with either hand. Wrap around guard, reversing switch, thumb control, and horn are standard.

Top mounted tiller arm offers excellent operator comfort and minimum steering effort. Gas assisted spring gently returns handle to vertical position.

- **TRANSMISSION**

Vertically mounted drive motor is direct mounted to gear housing. Oil bathed ZF GK10 hypoid bevel gear drive train with tapered roller bearings transfers power to axle. State of the art optimized gear technology supplies advantages such as minimal envelope circle, zero maintenance, low noise level, high efficiency and high performance.

- **MAST & PANTOGRAPH**

I-beam mast with dual lifting chains. Pantograph stroke extends the fork carriage beyond the units straddle legs, with integral tilt and sideshift.

- **STRADDLE LEGS & FORKS**

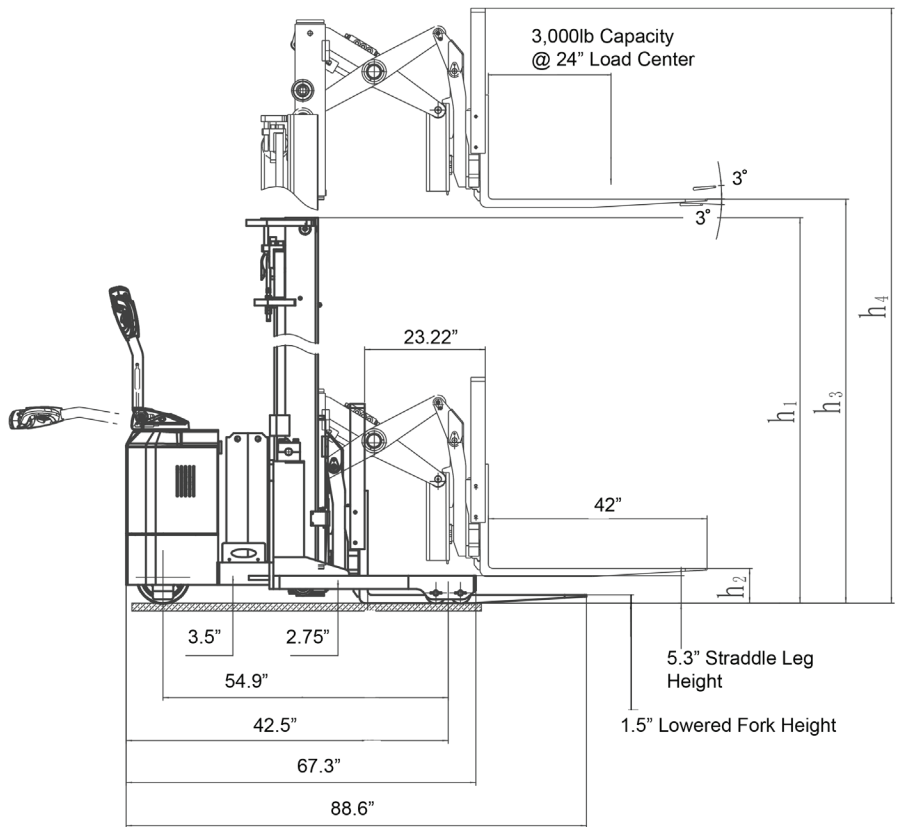
Fixed straddle leg inside dimensions (ID) available at 34" or 42" resulting in a 42" or 50" outside dimension (OD).

Class 2 ITA fork carriage with 36" tall load back rest and 42" Forks spacing is adjustable.

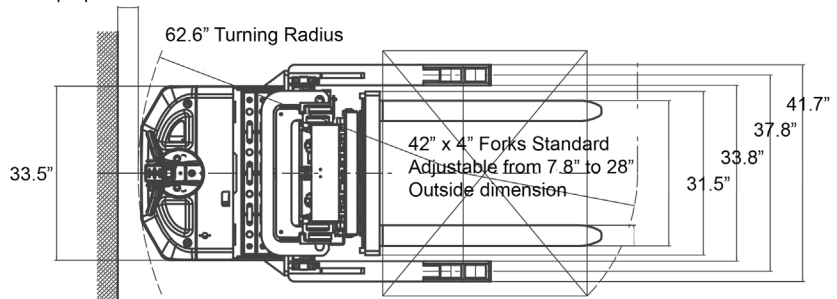


SPECIFICATIONS

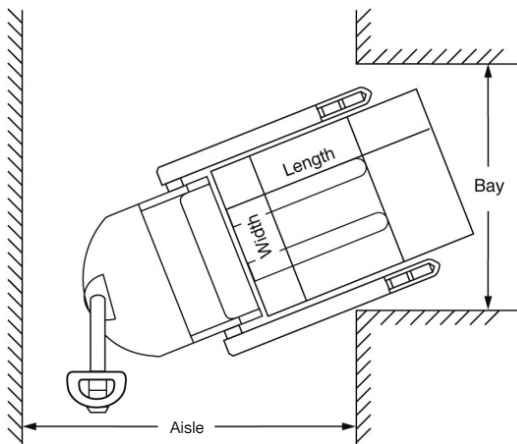
- CAPACITY**
 3000 lbs. at 24" Load Center
- BATTERY COMPARTMENTS**
 31.6" x 9.06" x open
 31.6" x 13.1" x open (PDSR30-189)
- SPEED**
 ZAPI travel controller
- TRAVEL**
 Variable from 0 mph to 3.41 mph empty
 Variable from 0 mph to 3.1 mph loaded
- LIFT**
 Up to 40 fpm empty.
 Up to 35 fpm loaded—3000lbs
- LOWERING**
 Up to 29 fpm empty.
 Up to 57 fpm loaded—3000lbs
- WEIGHT**
 3,690-4,200lbs Chassis Only
- TIRES / WHEELS**
DRIVE
 10" x 4" polyurethane
DUAL LOAD
 (2) 4" x 2.75" polyurethane



Overall length increased by up to 3" when control handle is perpendicular to the direction of travel



Model	Straddle ID/OD	Mast	Lift height (H3)	Col Height (H1)	Free Lift (H2)	Ext Height (H4)	Weight Complete
WSRX30	34/42 or 42/50	Two Stage	106"	73.5"	6.5"	144.25"	3690 lbs
WSRX30	34/42 or 42/50	Two Stage	126"	83"	6.5"	166.75"	3750 lbs
WSRX30	34/42 or 42/50	Three Stage	157"	77.5"	39.25"	195.25"	3980 lbs
WSRX30	42/50	Three Stage	189"	95.0"	39.25"	227.00"	4200 lbs



Aisle dimensions listed above assume the minimum bay width to be straddle OD plus 5" (2.5" on each either side of straddle leg). Straddle OD is the load width plus 8". Truck performance may vary due to application requirements and changes in model design.

Aisle Guide

WSRX30 Right Angle Stacking

Load Length			
Load Width	36"	40"	48"
36"	79.5"	79.5"	79.5"
40"	81.0"	81.0"	81.0"
48"	85.3"	85.3"	85.3"

For ease of use add 8" to aisle dimension listed



CLARK Material Handling Company
 North American Headquarters
 700 Enterprise Drive • Lexington, KY 40510
 866-252-5275 • www.clarkmhc.com



59-894-0966

WSTX22

CLARK®

CLARK introduces the WSTX22 powered drive counterbalanced narrow aisle walkie for handling a variety of loads

FEATURES & BENEFITS

- **HYDRAULICS**

Lift cylinder is hard chrome. Pump unit includes motor, gear pump, and solenoid. Pressure compensated lowering valves regulates lowering speeds.

- **ELECTRICAL**

AC travel controller and AC drive motor provides high torque throughout the entire drive range. Regenerative braking and brushless design drastically reduces maintenance. Travel speed remains constant relative to throttle position regardless of the load on truck. Automatic resetting circuit breaker and one-piece micro switch design complete the system.

- **BRAKES**

Electromagnetic brake is mounted on motor armature shaft multiplying the braking power through the transmission. Brake is applied when control arm is in the vertical or horizontal handle position. Travel speed is reduced when forks are above 12" fork height. Neutral braking resists roll back on ramps.

- **CONTROLS**

Travel, lift, lower and tilt functions are located in the ergonomic operator handle, designed to allow operation with either hand. Wrap around guard, reversing switch, thumb control, and horn are standard.

Angle grips are designed to allow easy operation with either hand. Low mounted tiller arm offers excellent operator comfort and minimum steering effort.

- **TRANSMISSION**

Vertically mounted drive motor is direct mounted to gear housing. Oil bathed ZF GK10 hypoid bevel gear drive-train transfers power to axle. State of the art optimized gear technology supplies advantages such as minimal envelope circle, zero maintenance, low noise level, high efficiency and high performance.

- **FRAME AND MAST**

Bolt-on high visibility I-beam construction, lift cylinders are positioned in outer I-beam for good operator visibility through mast. Dual lifting chains. Class two ITA fork carriage with 36" tall load back rest

- **ACCESSIBILITY**

Removal of two-piece power head cover exposes major components for inspection and maintenance. Drive wheel is removed with one nut.

- **BEARINGS**

DRIVE WHEEL-Tapered roller bearings sealed in oil bath

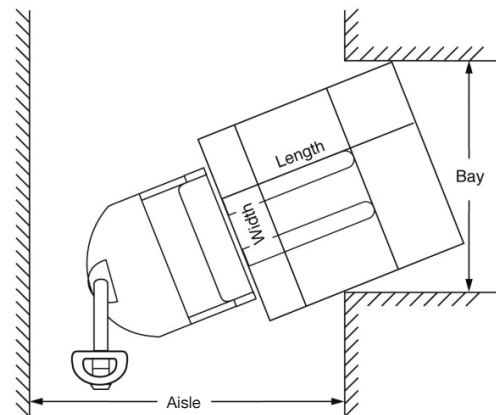
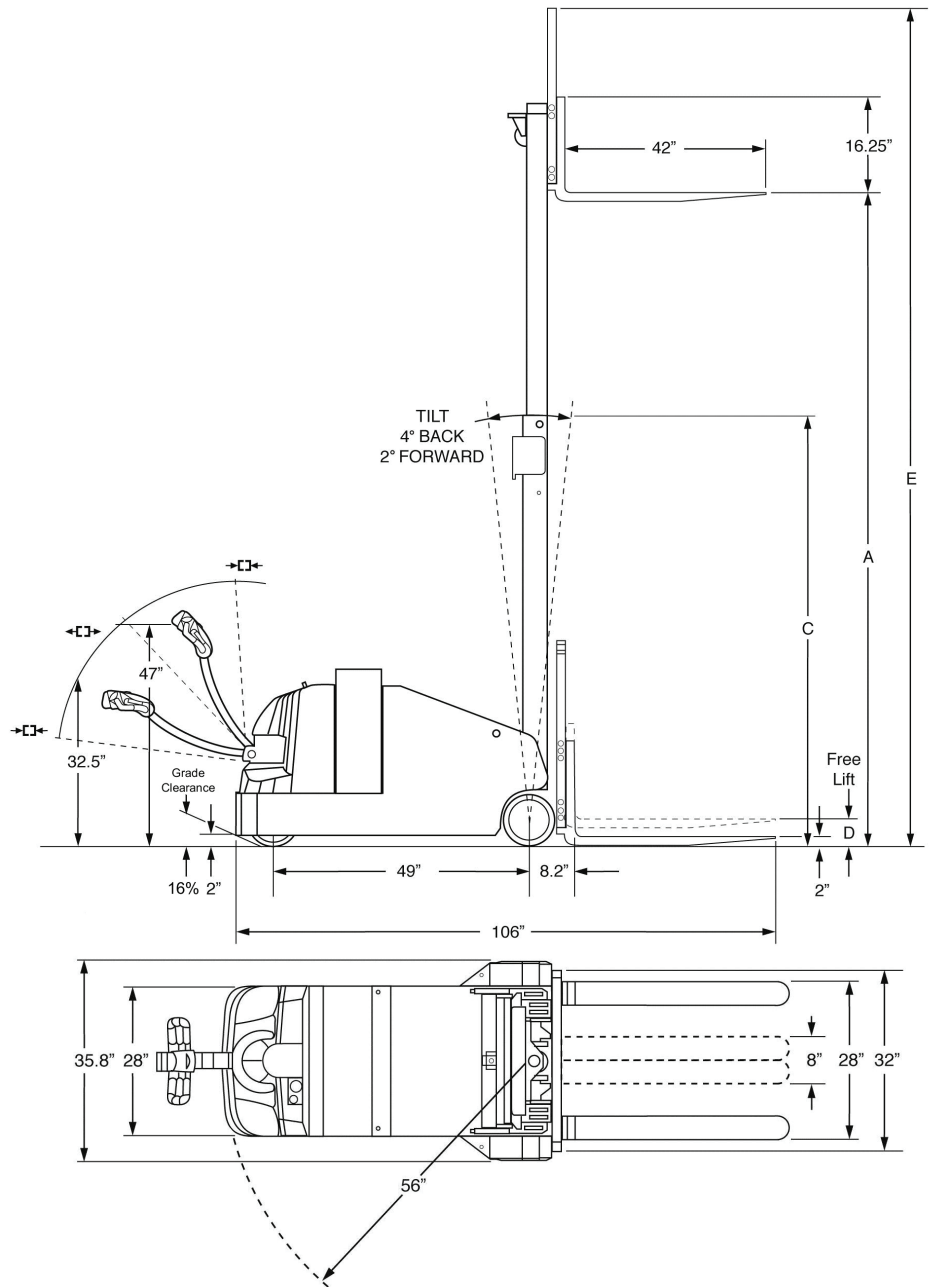
LOAD WHEELS-Sealed ball bearings



CLARK®

SPECIFICATIONS

- CAPACITY**
 2200 lbs. at 24" Load Center
- BATTERY**
 Compartment: 26.37" x 9.01" x open.
 Minimum battery weight 340 lbs.
- SPEED**
 24-volt ZAPI ACO Travel Controller
TRAVEL
 Variable from 0 mph to 3.4 mph empty
 Variable from 0 mph to 3.1 mph loaded
- TILT**
 4° Back 2° forward
- LIFT**
 Up to 33 fpm empty
 Up to 25 fpm loaded
- LOWERING**
 Up to 29 fpm empty
 Up to 57 fpm loaded
- TIRES / WHEELS**
DRIVE
 9" x 3" polyurethane
LOAD
 8" x 3" polyurethane
- STANDARD EQUIPMENT**
 - Regenerative Neutral Braking
 - Gas Assist Spring Handle
 - Low Battery Interrupt
 - Hour Meter BDI Combo Gauge
 - Key Switch
 - 36" Tall Load Backrest
 - Four Pack Power MF 224 AH/5.4 kwh 110VAC plug-in charger



Aisle dimensions listed above assume 4" between loads. Use the larger dimension; load width or load length. For ease of use and add 6" to 12" for operator clearance to the appropriate specifications listed above. Truck performance may vary due to application requirements' and changes in model design.

Dimensions								
Model	Mast	Lift height	Col Height	Free Lift	Ext Height w/LBR	Grade-ability	Grade-ability	Weight Chasis Only
		A	C	D	E	Loaded	Unloaded	
WSTX22	Two Stage	104"	72.3"	6"	143"	5%	8%	4005 lbs.
WSTX22	Two Stage	128"	83.2"	6"	165"	5%	8%	4082 lbs.

Aisle Guide

WS22M Right Angle Stacking

Load Length			
Load Width	36"	40"	48"
36"	115"	120"	125"
40"	115"	120"	125"
48"	115"	120"	125"

For ease of use add 8" to aisle dimension listed



CLARK Material Handling Company
 North American Headquarters
 700 Enterprise Drive • Lexington, KY 40510
 866-252-5275 • www.clarkmhc.com



59-894-0964

WSTX33



CLARK WSTX33 A Power Steering, Power Drive Counterbalanced Walkie Truck

FEATURES & BENEFITS

- **HYDRAULICS**

Lift cylinder is hard chrome. Pump unit includes motor, gear pump, and solenoid. Pressure compensated lowering valves regulates lowering speeds.

- **ELECTRICAL**

Infinitely variable travel controller and AC drive motor provides high torque through-out the entire drive range. Regenerative braking and brushless design drastically reduces maintenance.

Travel speed remains constant relative to throttle position regardless of the load on truck. Automatic resetting circuit breaker and one piece micro switch design complete the system.

- **BRAKES**

Electromagnetic brake is mounted on motor armature shaft multiplying the braking power through the ZF GK20 transmission.

Brake is applied when control arm is in the vertical or horizontal handle position. Travel speed is reduced when forks are above 12" fork height. Neutral braking resists roll back on ramps.

- **CONTROLS**

Travel, lift, lower and tilt functions are located in the ergonomic operator handle, designed to allow operation with either hand. Wrap around guard, reversing switch, thumb control, and horn are standard.

- **TRANSMISSION**

Vertically mounted drive motor is direct mounted to gear housing. Oil bathed ZF GK10 hypoid bevel gear drive-train transfers power to axle. State of the art optimized gear technology supplies advantages such as minimal envelope circle, zero maintenance, low noise level, high efficiency and high performance.

- **FRAME AND MAST**

Bolt-on high visibility I-beam construction, lift cylinders are positioned in outer I-beam. Dual lifting chains. Class two ITA fork carriage with 36" tall load back rest.

- **BEARINGS**

DRIVE WHEEL-Tapered roller bearings sealed in oil bath

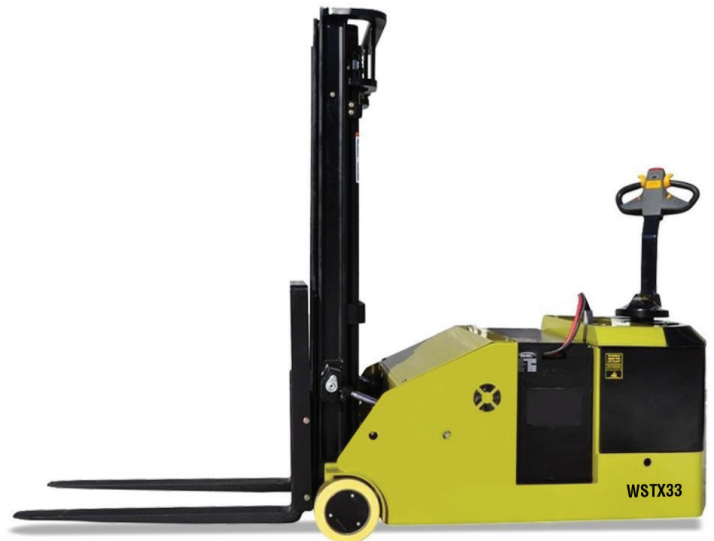
LOAD WHEELS-Sealed ball bearings

- **ACCESSIBILITY**

Removal of two piece power head cover exposes major components for inspection and maintenance. Drive wheel is removed with one nut.

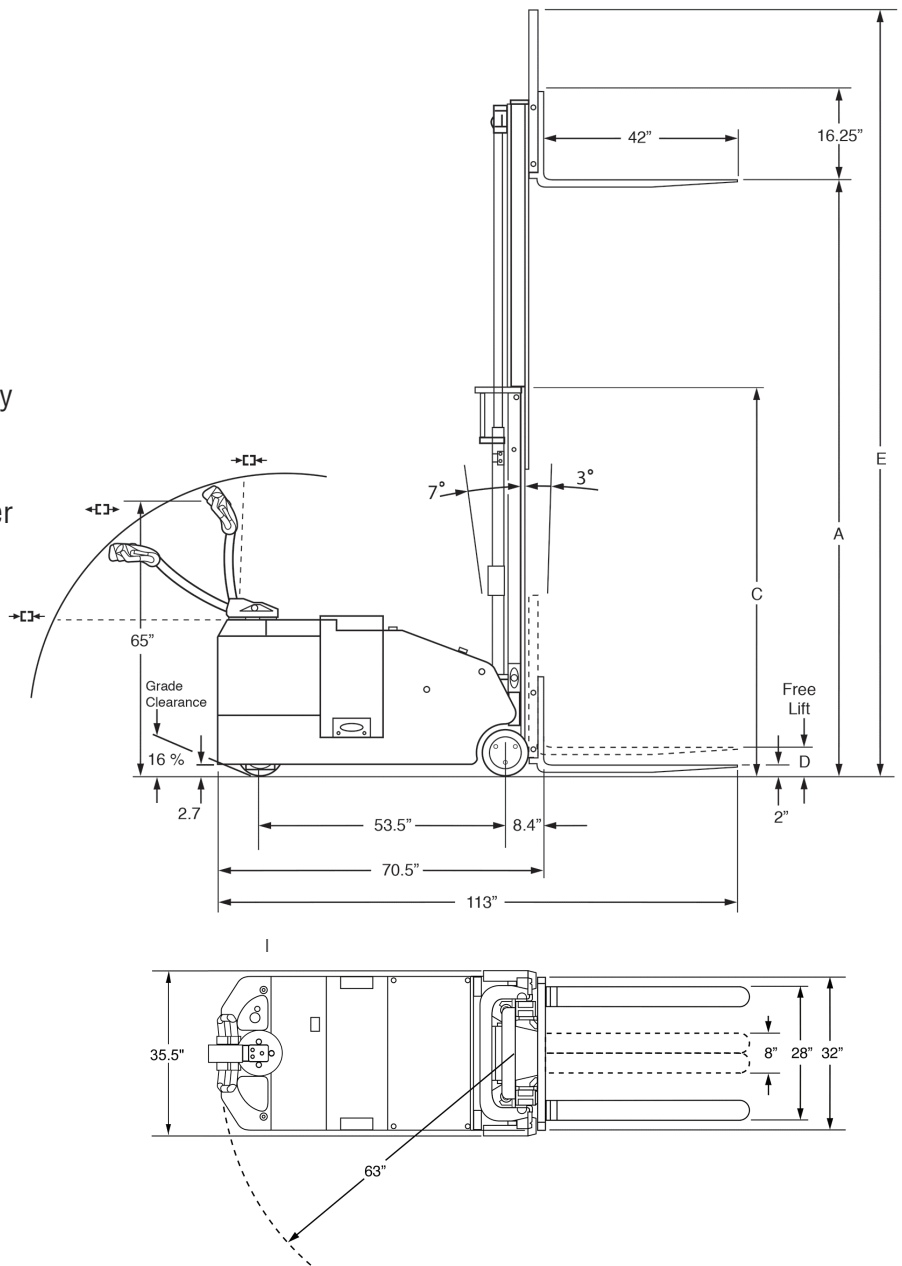
- **STANDARD EQUIPMENT**

- Regenerative Neutral Braking
- Gas Assist Spring Handle
- Low Battery Lift Interrupt
- Hour Meter BDI Combo Gauge
- Key Switch
- 35" Tall Load Backrest

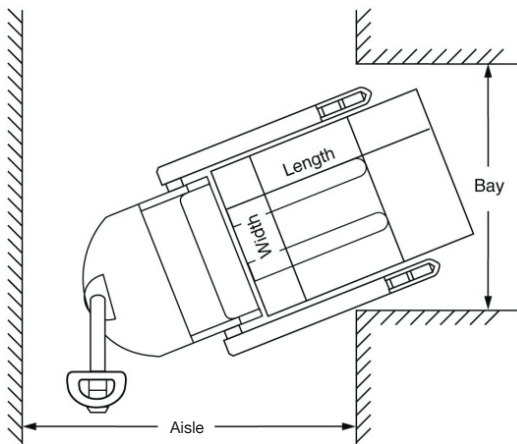


SPECIFICATIONS

- CAPACITY**
 3300 lbs. at 24" Load Center
- BATTERY COMPARTMENTS**
 32.5" x 13.1" x open
 Anderson 175 Gray—A-11 Minimum battery weight 1050 lbs.
- SPEED**
 24-volt ZAPI Travel controller, separate power steering controller.
- TRAVEL**
 Variable from 0 mph to 3.1 mph empty
 Variable from 0 mph to 3.4 mph loaded
- LIFT**
 Up to 34 fpm empty.
 Up to 24 fpm loaded
- LOWERING**
 Up to 27 fpm empty.
 Up to 20 fpm loaded
- TIRES / WHEELS**
DRIVE
 10" x 4.1" polyurethane
LOAD
 10" x 4" polyurethane



Model	Mast	Lift height (A)	Col Height (C)	Free Lift (D)	Ext Height (E)	Gradability		Weight Complete
						Loaded	Unloaded	
3300 Capacity @ 24" Load Center ITA Class II Fork Carriage								
WSTX33	Two Stage	105"	72"	6"	139"	5%	8%	4390 lbs
WSTX33	Two Stage	126"	83"	6"	161"	5%	8%	4695 lbs
WSTX33	Three Stage	157"	72"	50"	192"	5%	8%	4820 lbs



Aisle dimensions listed above assume 4" between loads. Use the larger dimension; load width or load length. For ease of use and add 6" to 12" for operator clearance to the appropriate specifications listed above. Truck performance may vary due to application requirements and changes in model design.

Aisle Guide

WSTX33 Right Angle Stacking

Load Length			
Load Width	36"	40"	48"
36"	112"	121"	129"
40"	112"	121"	129"
48"	112"	121"	129"

For ease of use add 6 to 12" to aisle dimension listed



CLARK Material Handling Company
 North American Headquarters
 700 Enterprise Drive • Lexington, KY 40510
 866-252-5275 • www.clarkmhc.com



59-894-0968